

The Future of Ann Street Landfill

Community Conversations:
Building Our Neighborhood Project

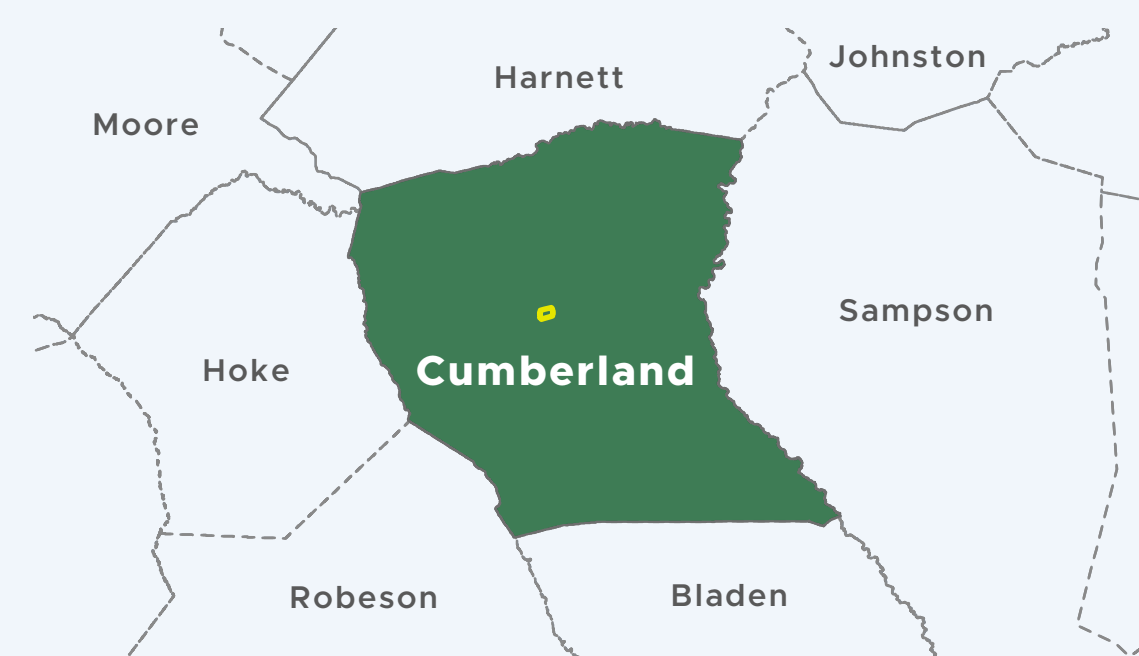
Why We're Here:

The Problem

Since 1980, the Cumberland County Solid Waste Department and Ann Street Landfill has served county residents and businesses for disposal of its solid waste.

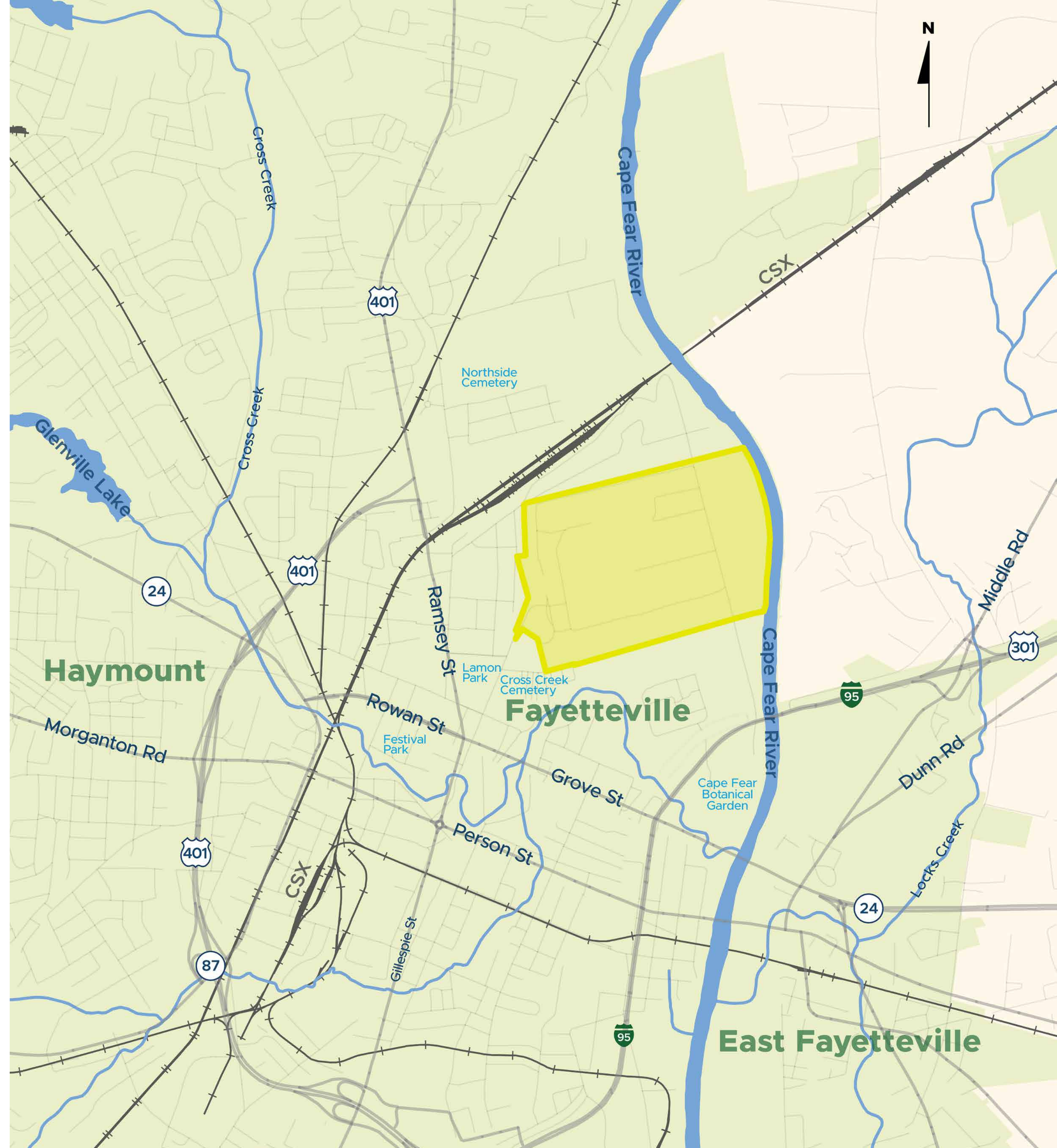
The landfill will reach capacity in just seven years!

County Map

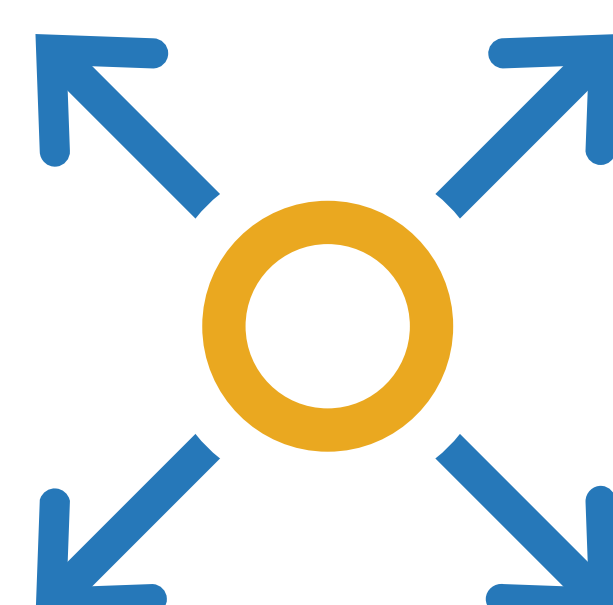


Legend

- Major Road
- CSX Railroad
- Stream and Creek
- Water Body
- Ann Street Landfill
- Fayetteville



Where We're Going: *The Solution*



STAGE 1

Construct a transfer station

Waste will ship long distance via truck to landfills in other communities.

The county's goal is to have this transfer station up and running by mid-summer of 2024.

STAGE 2

Expand the current landfill

Will expand onto county property adjoining the Ann Street Landfill to the west. Most of this property is a former unlined landfill.

This will add 20 years of capacity, extending the life of the landfill until 2050.

STAGE 3

Use the transfer station during landfill expansion

This will ease the burden on the current landfill while the county permits and constructs the landfill expansion to the west.

STAGE 4

Transition to using the expanded landfill as each section is ready

The county will gradually decrease use of the transfer station while increasing use of the expansion area.

Our Commitment:

Environmental Justice

The permitting process for the Ann Street Landfill expansion includes an environmental justice review for the Ann Street site.

This review is designed to avoid, minimize, or mitigate disproportionately high and adverse human health and environmental effects on minority populations and low-income populations.

As our valued neighbors, we are inviting you to join us to discuss plans for the future of Ann Street Landfill and share your feedback for how we can be a better neighbor.



What We Do:

What is a landfill?

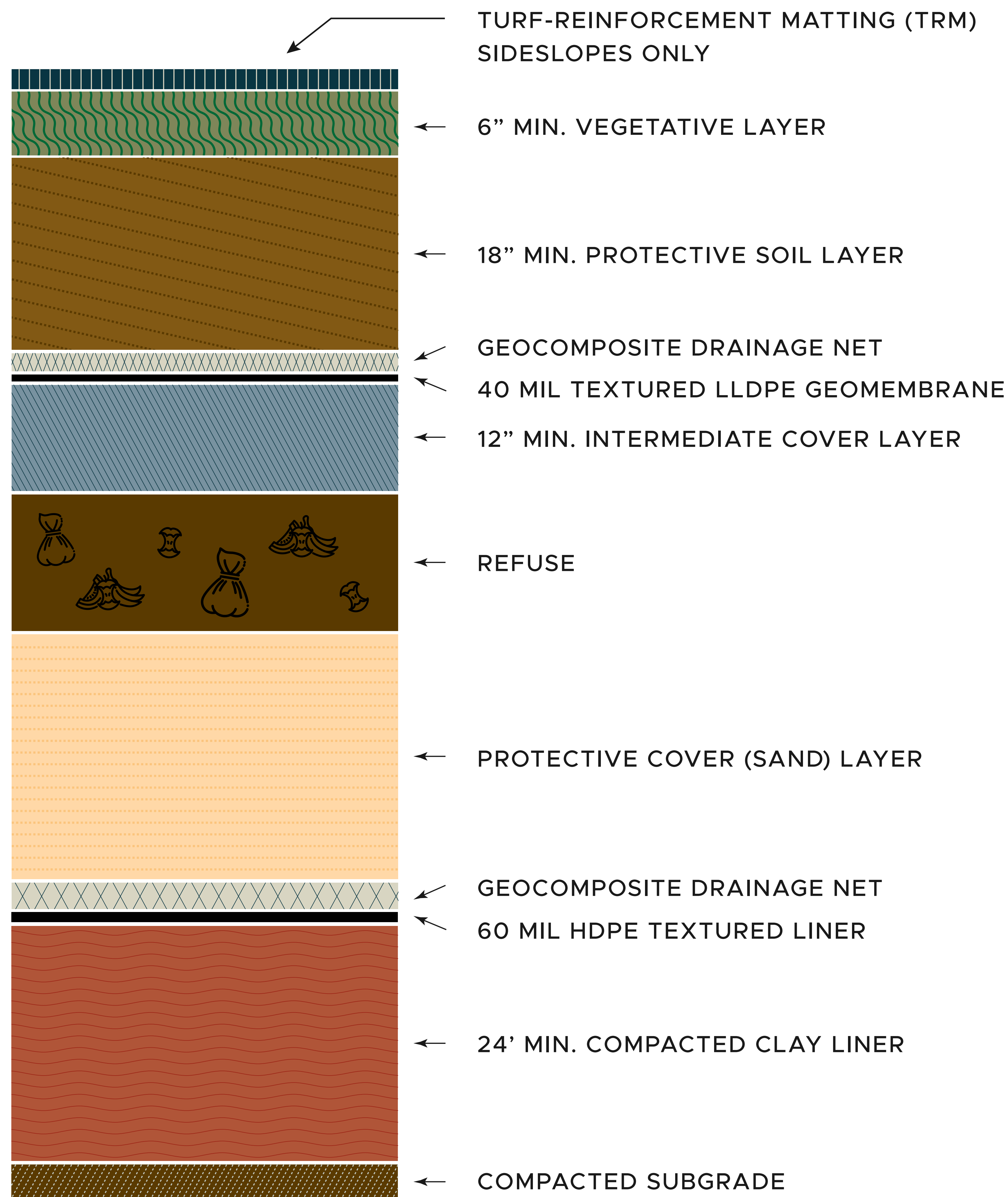
Grassy hills and earth surrounded by a landscape of trees, may not sound like what most people think of as a landfill. Landfills are carefully designed, constructed and operated to fully contain waste in an efficient and safe manner.

Waste Journey to Landfill and Beyond



What We Do:

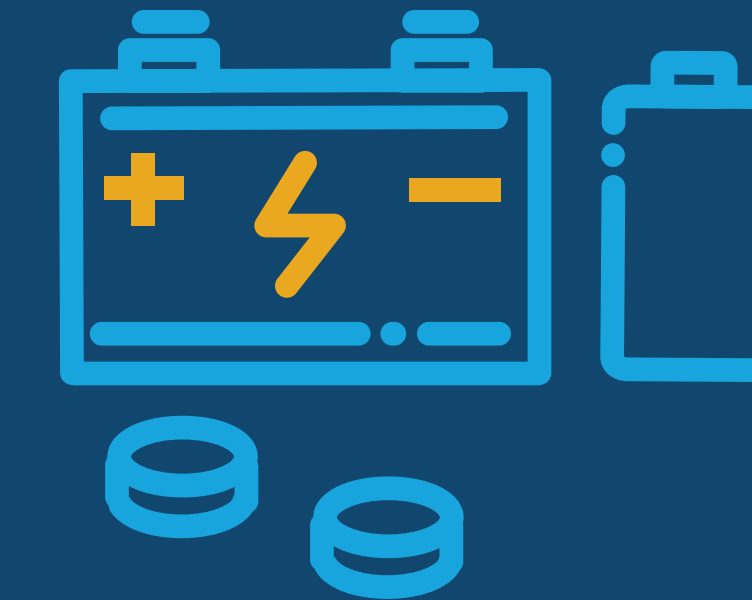
A Deeper Look



Additional Services



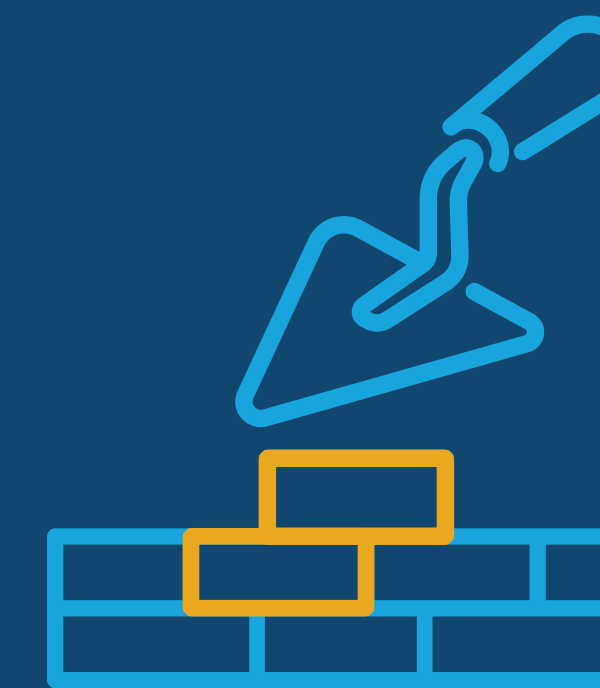
16 collection sites for household garbage, recycling and yard waste



Receipt of used oil, electronics, tires, antifreeze, lead acid batteries and other wastes at the collection sites



A household hazardous waste collection center



Construction & demolition recycling (clean wood, brick, concrete, asphalt and dirt)



Mulching of yard waste, pallets, and clean wood



Telephone hotline



Special events (landfill tours, e-waste events, etc.)



Methane Gas collection and processing used by Cargill

What We Have: *Parts of Ann Street Landfill*



The Future of Ann Street Landfill: *Transfer Station*

Construct a transfer station at the Ann Street Landfill site to collect trash and then load it onto trucks to ship it long distance to a landfill in another community.

The county's goal is to have this transfer station up and running by mid-summer of 2024.

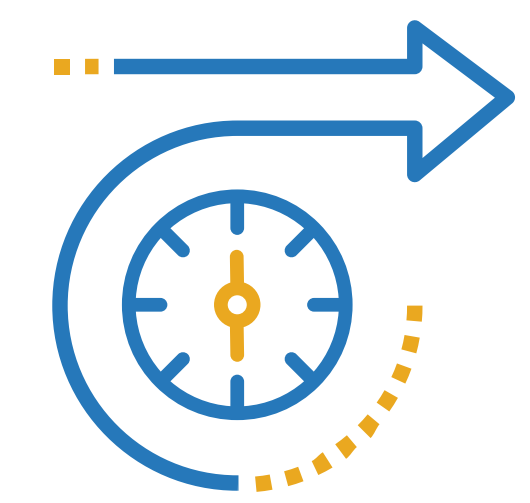


The Future of Ann Street Landfill: *Landfill Expansion*

West Expansion

- At least 20 years of additional capacity extending the life of the landfill until 2050.
- Remediation of existing unlined area.
- Further analysis is ongoing to determine if it is practical and what costs are for implementation.

What will it mean?



Long-Term Service

Adds at least an additional 20 years of capacity.



Environmental Responsibility

Minimal environmental impacts by utilizing the existing space and infrastructure.

Remediation of former unlined site, removing potential environmental impacts.

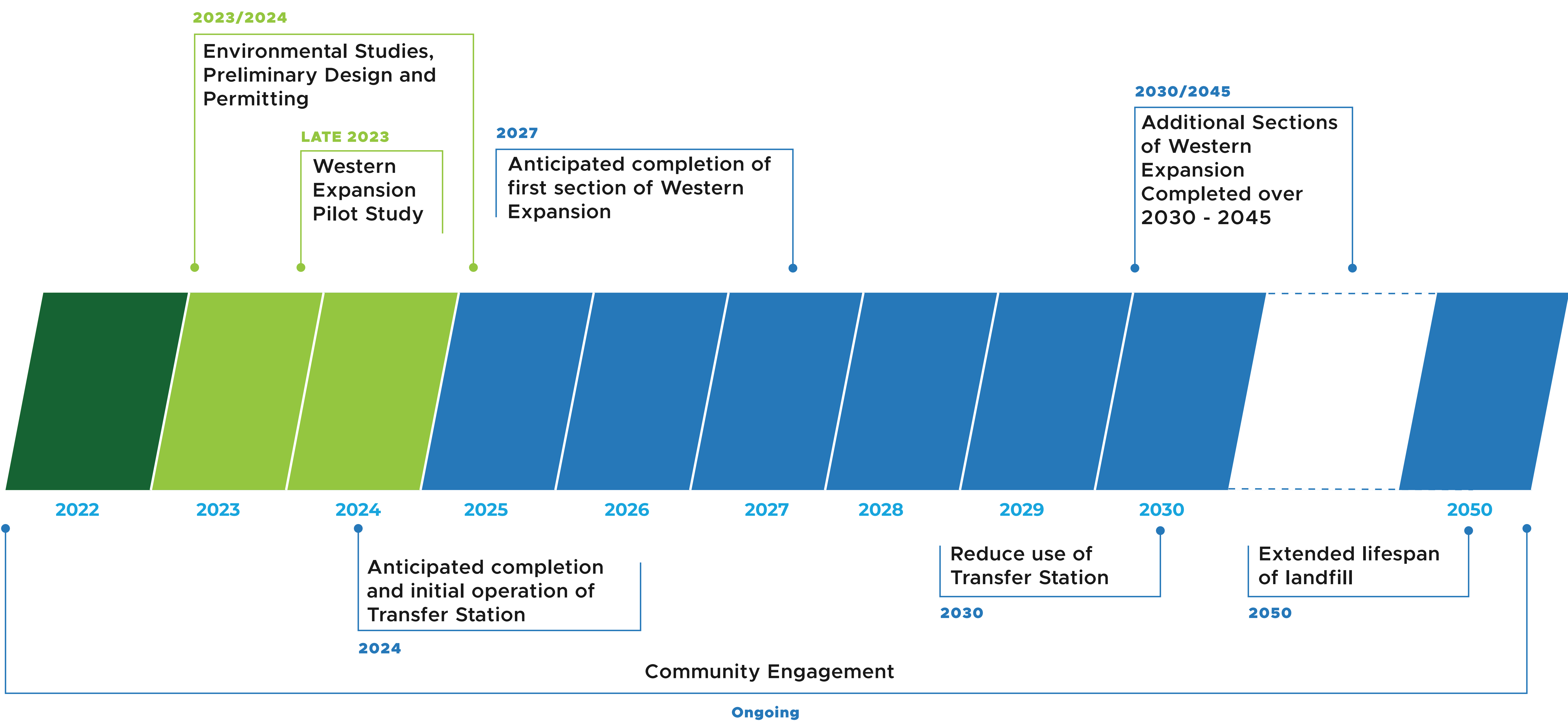


Odor Control

Keeping being a good neighbor front of mind. Landfill mining is not anticipated to generate odors off-site.



Project Schedule



Help us be better neighbors

We want to hear from you! Provide feedback in-person at the meeting or on the website.

Some things we want to hear about:

- Aesthetic Improvements
- Connection to Cape Fear River Trail
- How to Minimize Impacts
- Post-Closure Considerations



We want to hear from you!
Provide feedback at the
meeting or on the website.