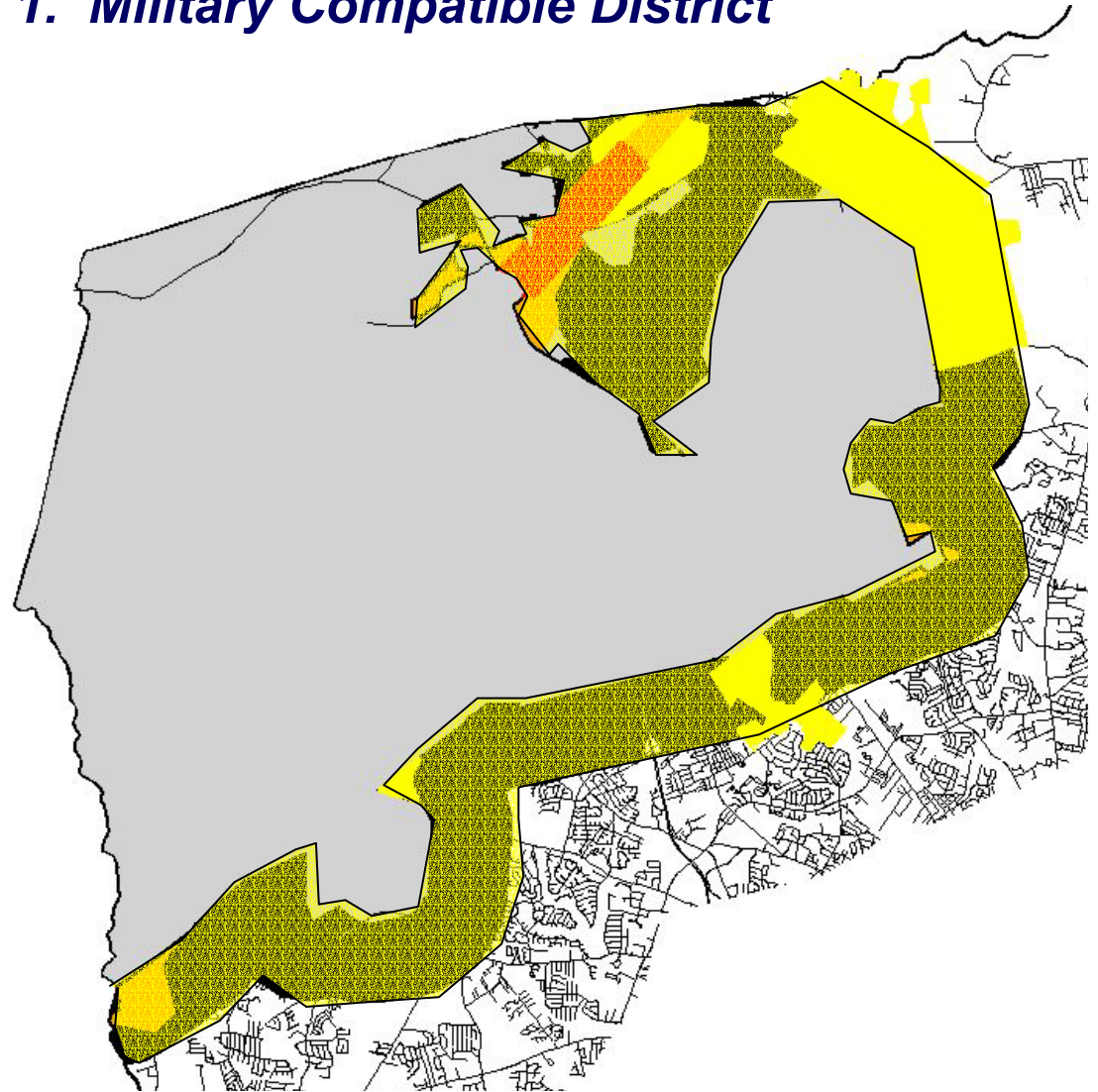






# *Action Plan*

*DRAFT*

## Action Plan: 1. Military Compatible District

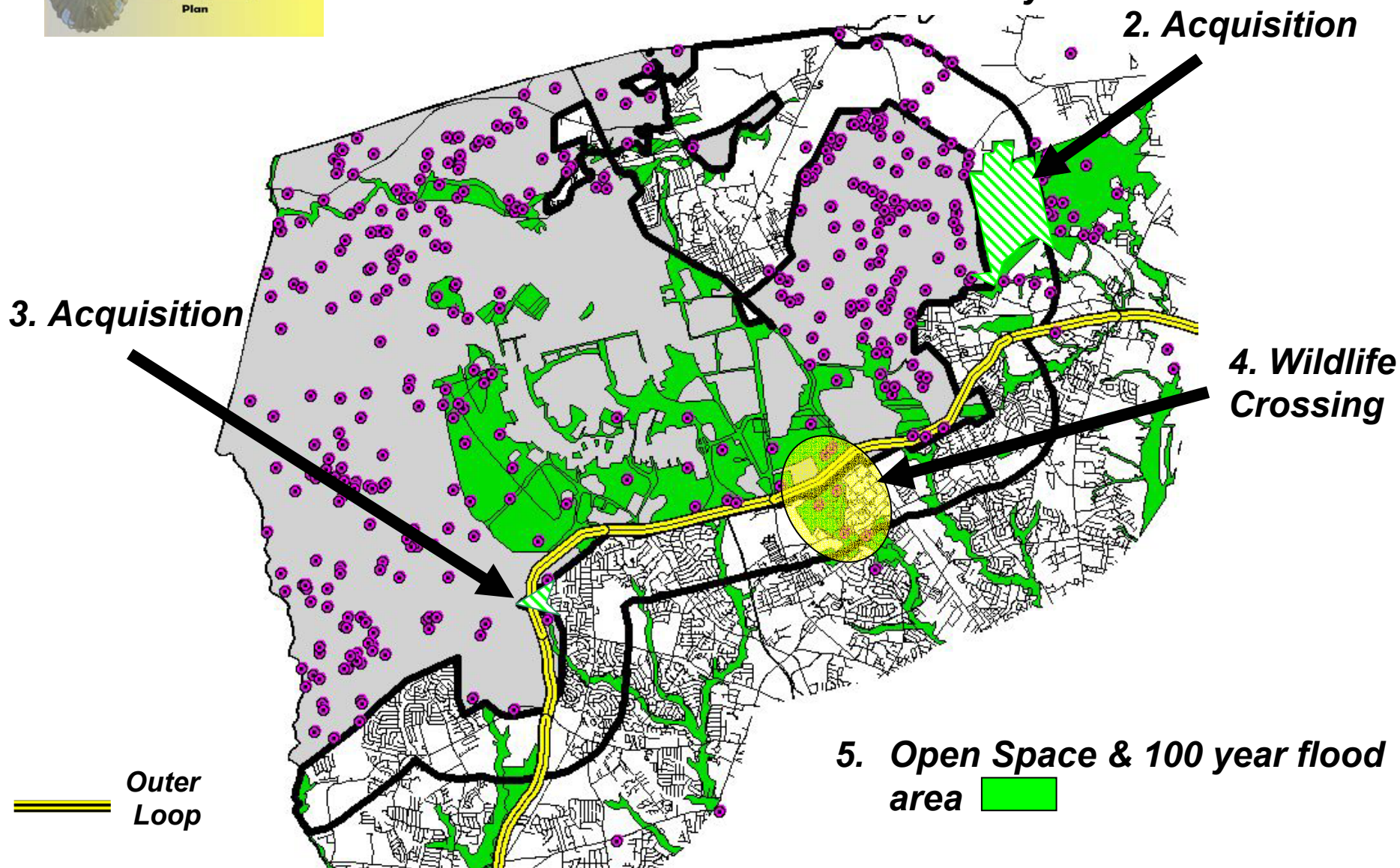


### Proposed Land Use

-  Critical (Operation & Mission)
-  Critical (Noise)
-  Important
-  Urban

*DRAFT*

## Action Plan: Natural Area's Connectivity

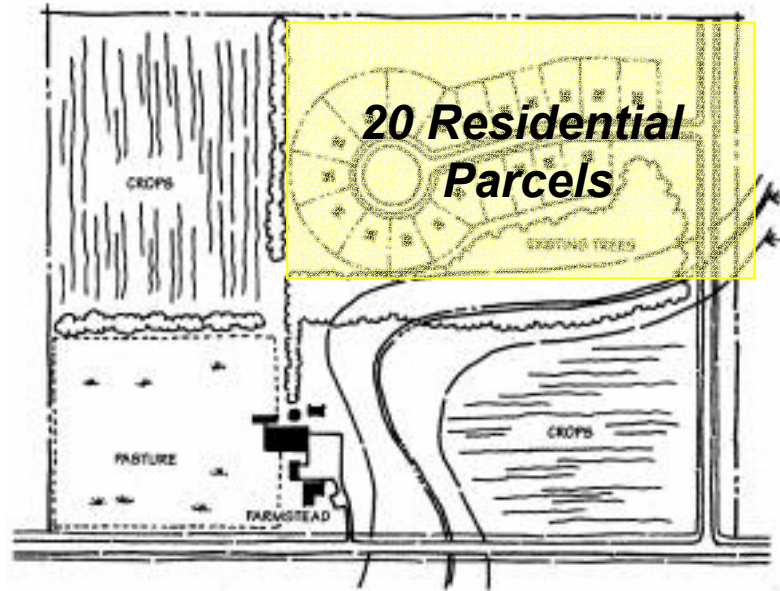
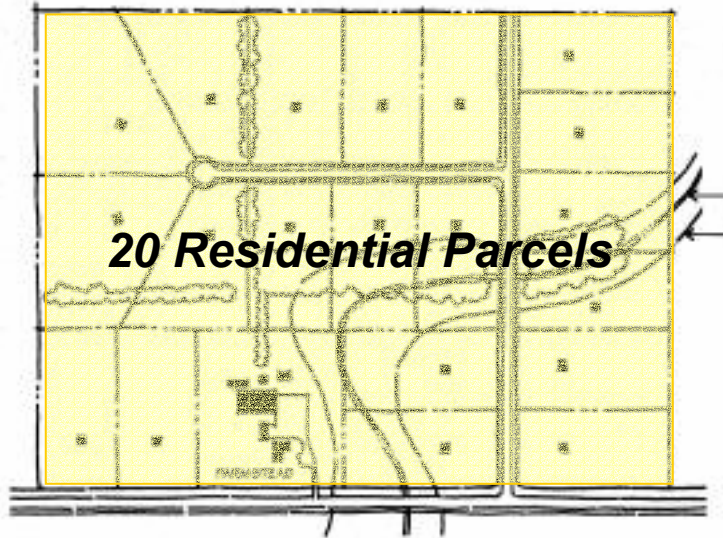


DRAFT



# Action Plan

## 6. Promote the use of open space subdivisions



## 7. Include the Military in the plan approval process for development within the Military Compatible District (except urban areas)



# ***Action Plan***

***Implement from Joint Land Used Study (May 2003):***

***General Recommendation A:***

***General Recommendation B:***

***General Recommendation D:***

***General Recommendation E:***

***General Recommendation F:***

***General Recommendation G:***

***General Recommendation H:***

***General Recommendation J:***

***Real Estate Disclosure Statements***

***Urban Encroachment (2,3,4 & 5)***

***Military Actions***

***Aircraft Low-Level Routes and  
Low Altitude Tactical Navigation Area***

***Transportation Policies***

***Urban Light Pollution***

***Building Code Revisions***

***Recreation Multi-Use Trail***



# **Cumberland County**

## **Military Compatibility Plan**

*May 2004 (Draft)*

*DRAFT*