



Cumberland County

Military Compatibility Plan

May 2004 (Draft)

DRAFT

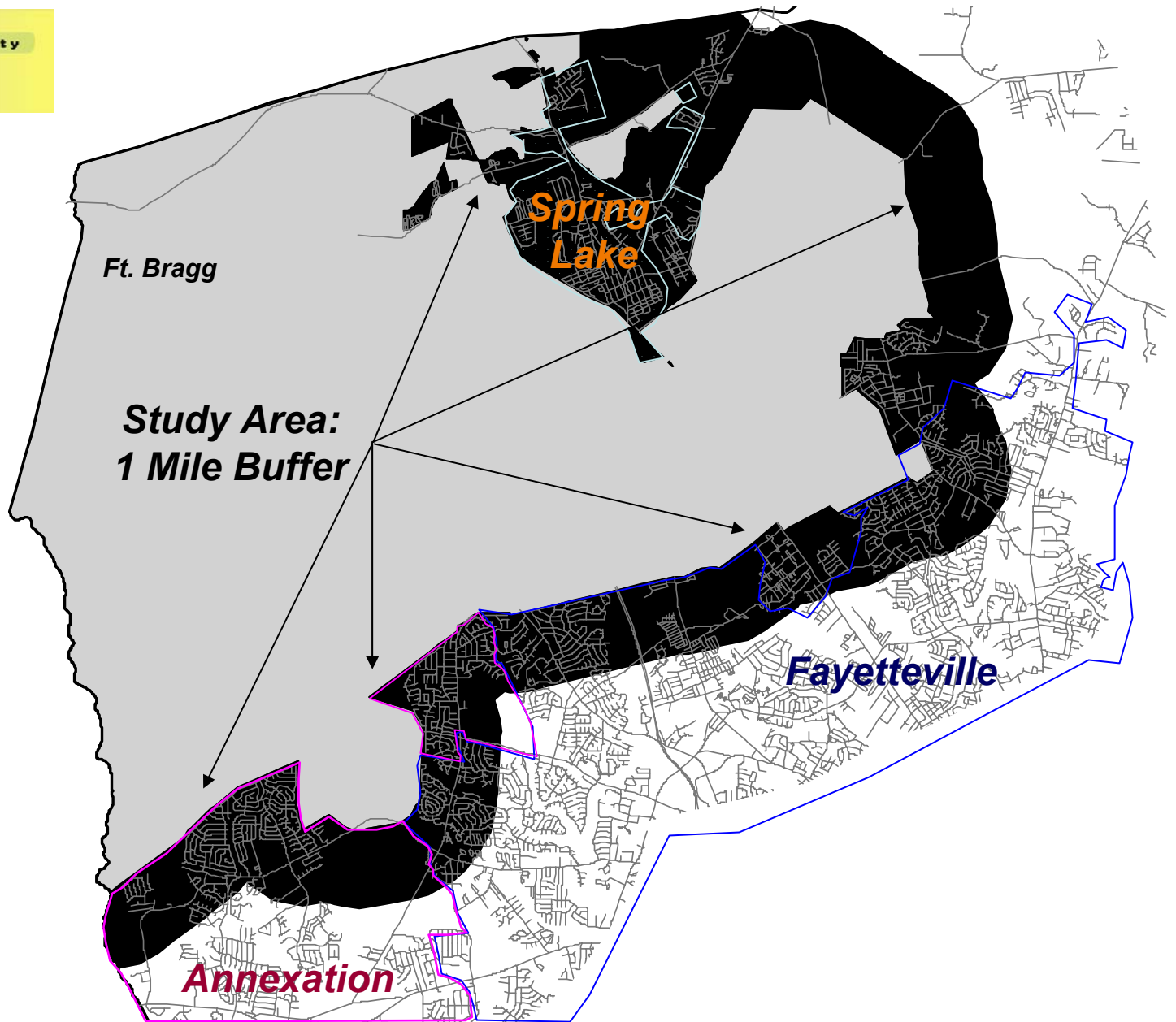
Presentation

1. Define Study Area

2. Joint Land Use Study (May 2003)







3. Cumberland County Military Compatibility Plan (May 2004)

- ***Goals***
- ***Land Uses Classifications***
- ***Recommendations***
- ***Action Plan***

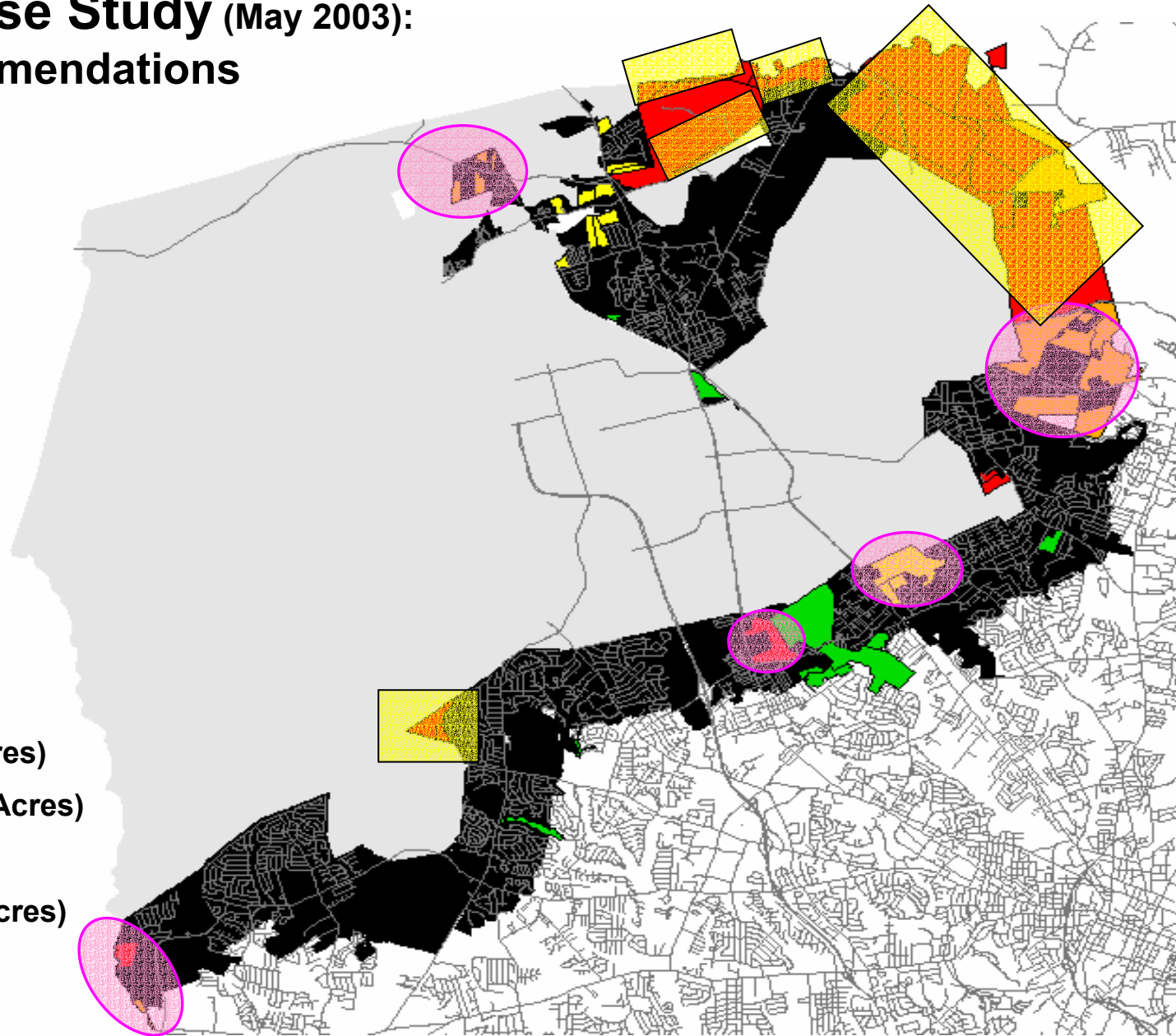


DRAFT

Joint Land Use Study (May 2003): Recommendations

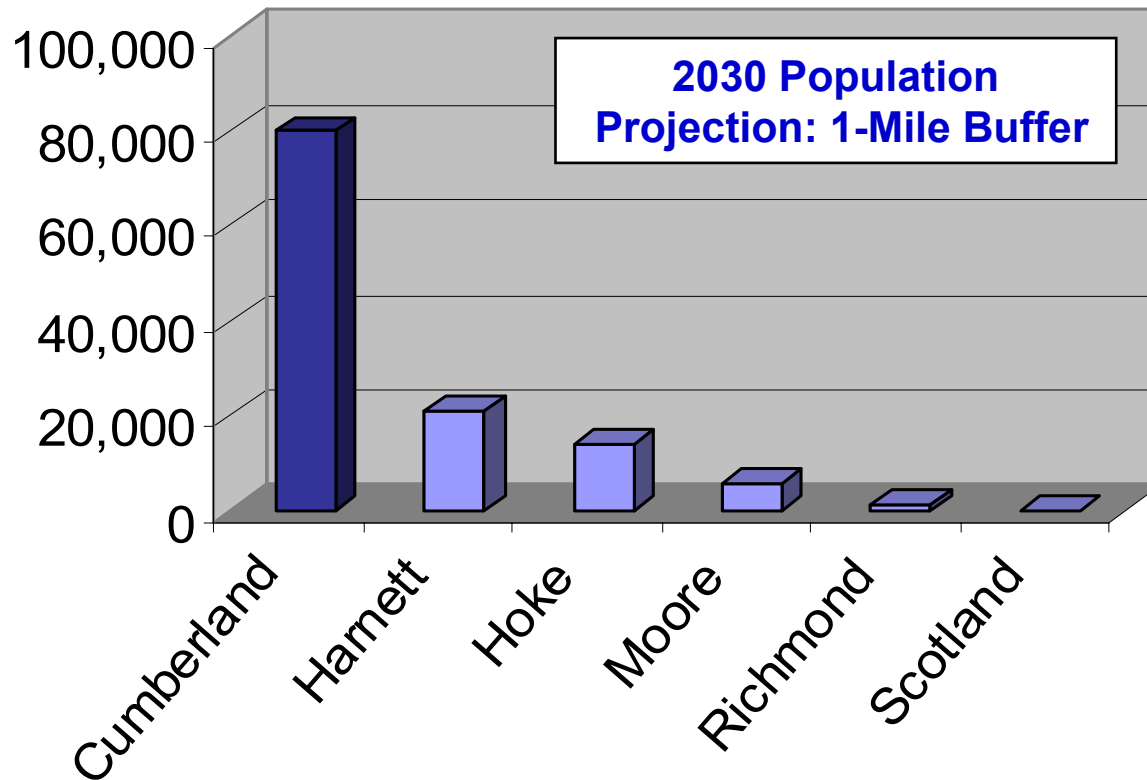
-  I-Mile Buffer:
Under Study
-  Critical (4384 Acres)
-  Important (1141 Acres)
-  LDD (427 Acres)
-  Protected (704 Acres)
-  Fort Bragg

DRAFT



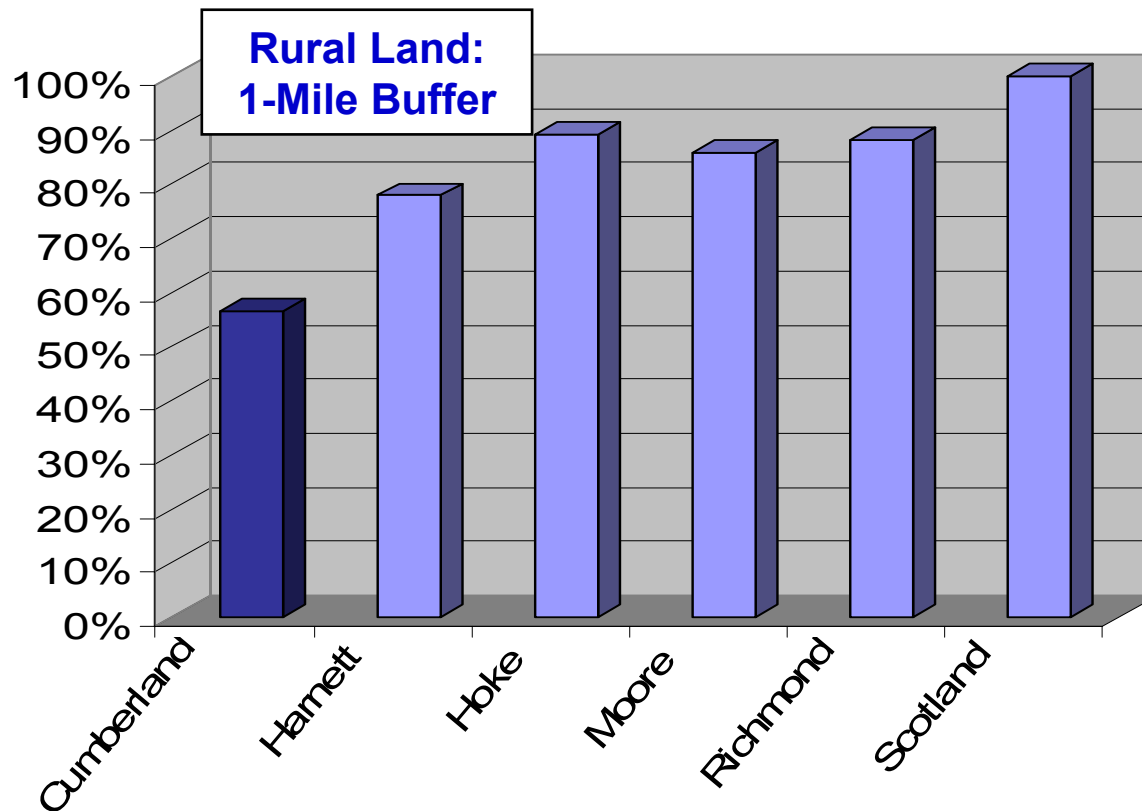
Joint Land Use Study (May 2003):

- The 2030 projection is close to 80,000 population.
- Least amount of rural land within the 1-mile buffer.
- Most urban land within the 1-mile buffer.



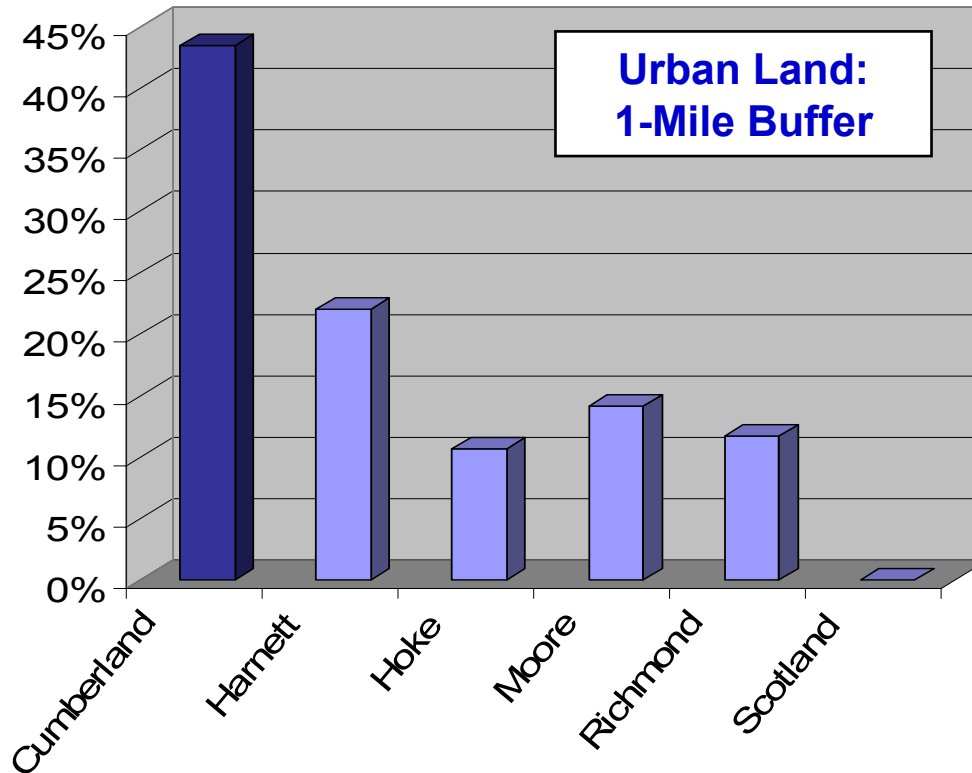
Joint Land Use Study (May 2003):

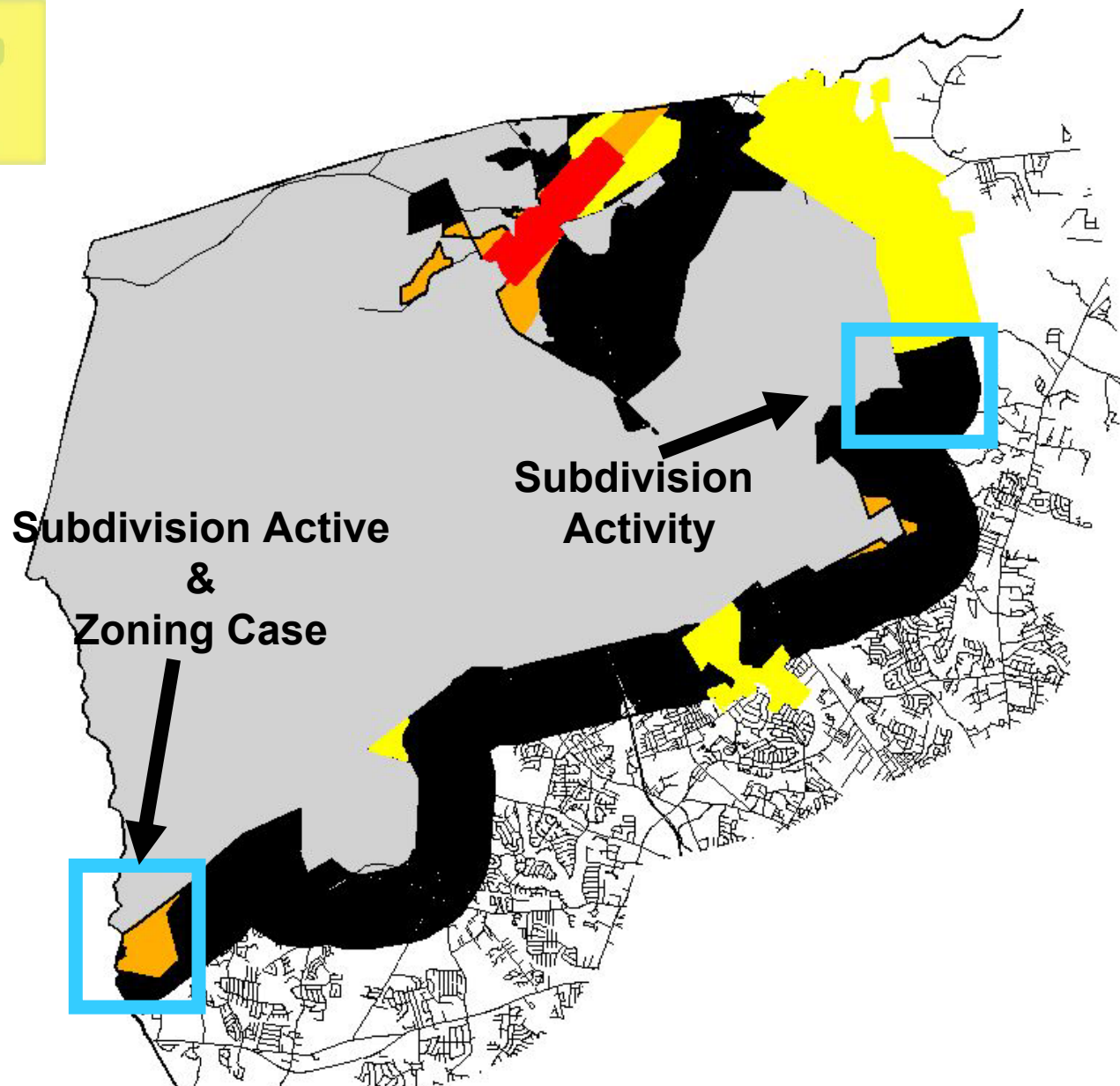
- The 2030 projection is close to 80,000 population.
- Least amount of rural land within the 1-mile buffer.**
- Most urban land within the 1-mile buffer.



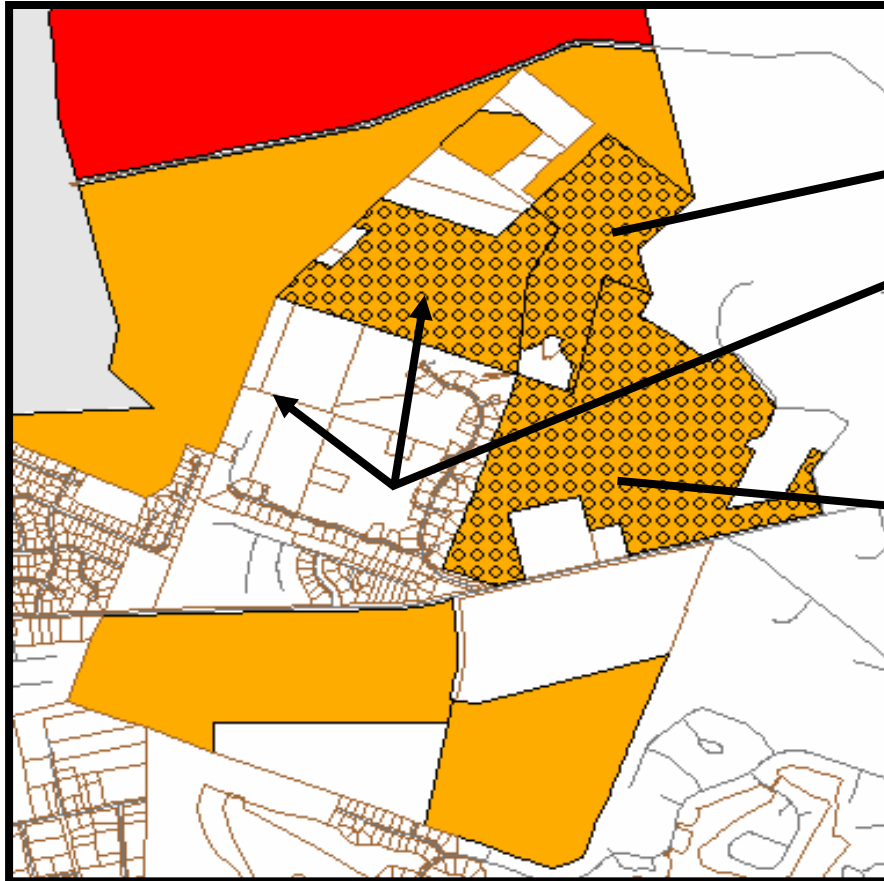
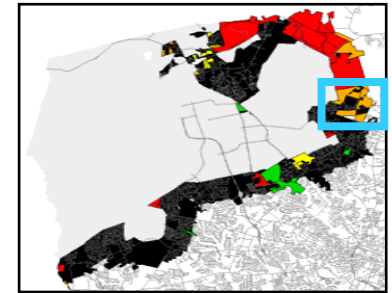
Joint Land Use Study (May 2003):

- The 2030 projection is close to 80,000 population.
- Least amount of rural land within the 1-mile buffer.
- Most urban land within the 1-mile buffer.**





Subdivisions Activity



Small Subdivision (2 Lots)

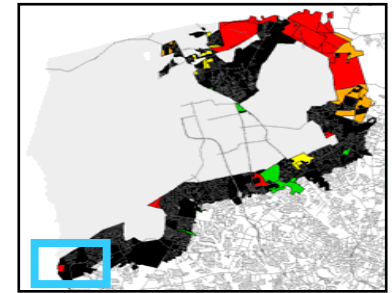
Woodbridge Subdivision

- Has over 100 lots subdivided
- Expanding North and West
- Phase Development

Subdivision

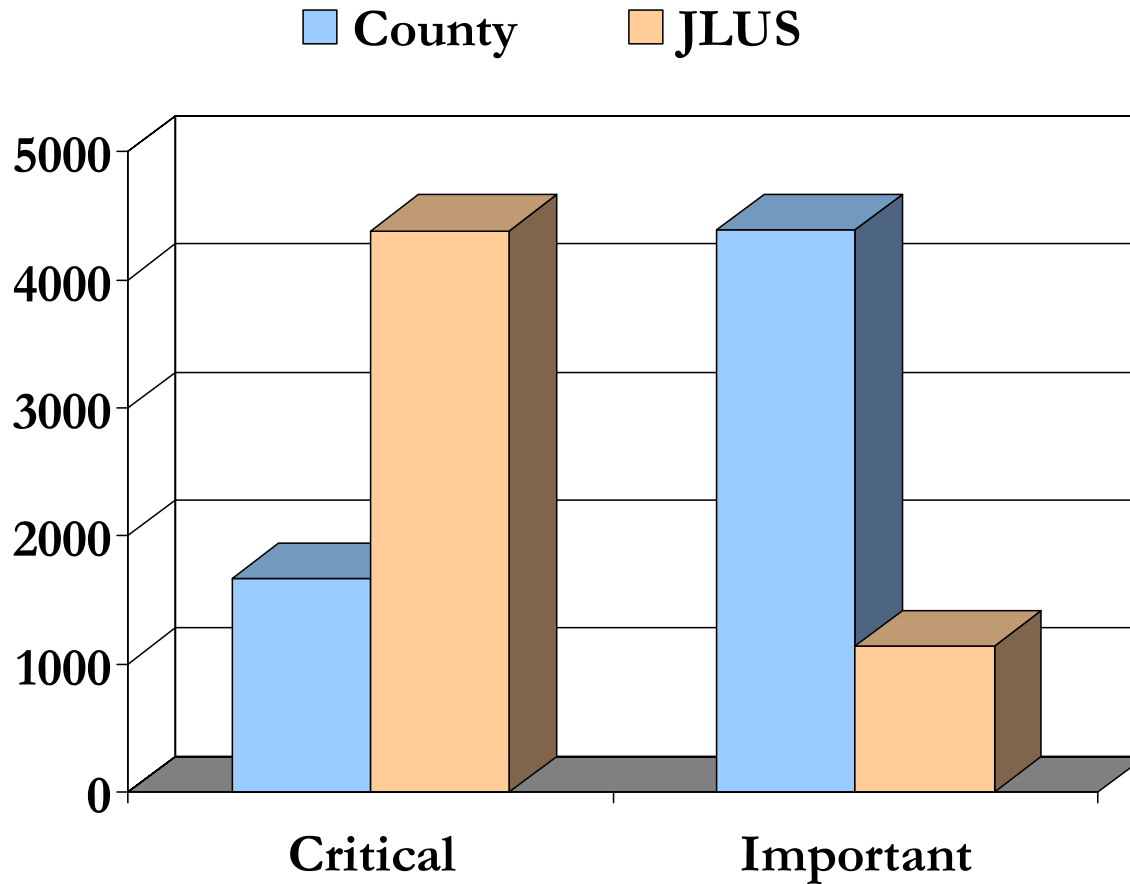
- 268 parcels
- Submitted and approved 1997

Zoning Case: Approved



RR to R10

Difference in Acreage Size



County:
Critical (1664 Ac)
Important (4391 Ac)

JLUS:
Critical (4384 Ac)
Important (1141 Ac)
LDD (427 Ac)